



## Shenzhen Company

SHENZHEN ZHUOMAO TECHNOLOGY CO., LTD.

Factory Address: F3 Building 11, Longwangmiao Industrial Zone,  
Baishixia Community, Fuyong, Bao'an, Shenzhen.

TEL: +86-755-29929955 29929956

FAX: +86-755-29929953

Contact: Jackie Tian

Mobile Phone: 0086 139 2345 8440

E-mail: Jackie@zhoumao.com.cn

<http://www.seamarkzm.com>

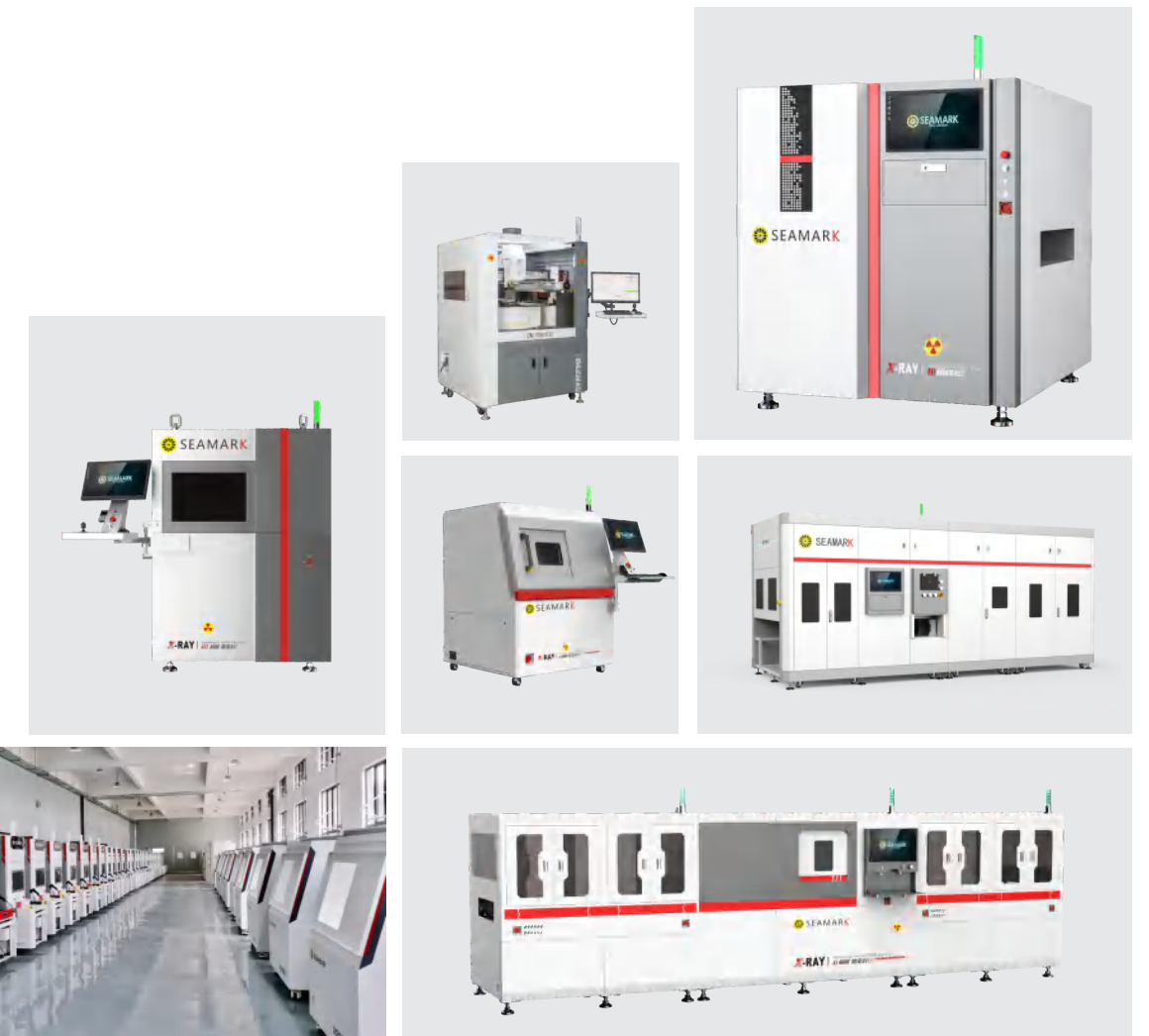
## Hongkong Company

Seamark Hongkong Limited

As the products are constantly improved and  
updated, this brochure is for reference only.

The company reserves the final interpretation right.

Ver: ZM-CY01-A1(202506)



Industrial CT X-Ray Inspection Equipment

Automated Optical Inspection Equipment

X-Ray Counting Equipment

Intelligent BGA Rework Equipment

**One-stop Solution**

SHENZHEN ZHUOMAO TECHNOLOGY CO., LTD.

SEAMARK HONGKONG LIMITED

卓尔不凡 耕深业茂

Seamark  
ZM

X-Ray Counting Machine/X-Ray Inspection Equipment  
Multifunctional BGA Rework Equipment  
Lithium Battery Inspection Equipment  
3D/CT Inspection Equipment  
One-stop Service



Company Profile

Shenzhen Zhuomao Technology Co., Ltd. (also known as "Seamark") was established in 2005 and is a national high-tech enterprise that integrates research and development, production, and sales. It is also a national key "little giant" enterprise specializing in precision, innovation, and novelty. The company has been deeply involved in the industry for more than 20 years and has been committed to providing advanced Industrial CT, X-Ray Inspection Equipment, AOI/SPI, X-Ray Counting Machine, and Intelligent BGA Rework Equipment for industries such as electronic manufacturing, integrated circuits, semiconductors, new energy batteries, and industrial castings.

The company adheres to independent innovation of core technologies, has a professional R&D team, has established a postdoctoral innovation practice base, and has carried out industry university research technology cooperation with research institutions such as Tsinghua University, the Institute of Advanced Technology of the Chinese Academy of Sciences, and Shenzhen University. Currently, it has obtained more than 300 patents and qualification certificates, undertaken the research and development of multiple national key special projects, and has been approved as the Engineering Technology Research Center for Industrial X-ray Intelligent Inspection Equipment in Guangdong Province.

Zhuomao Technology is headquartered in Shenzhen and has established branches and offices in Beijing, Suzhou, Xiangyang, Tianjin, Chongqing, Xi'an, Taiwan, Bangkok and other places, with a complete after-sales service system. Our products cover more than 100 countries and regions worldwide, and have become the preferred trusted brand for over 100,000 users worldwide!



# Milestones

# Cooperative Partner

2025

- In 2025 Zhuomao Technology celebrates its 20th anniversary
- In 2025 won the Guangdong Industrial X-ray Intelligent Inspection Equipment Engineering Technology Research Center

2024

- In November 2024, a joint laboratory was established with the Shenzhen Advanced Institute of the Chinese Academy of Sciences
- Pass the mid-term acceptance and results release of the national key R&D project in November 2024
- The East China (Suzhou) Exhibition Center will be officially opened in July 2024
- In June 2024, the company will be awarded the title of "Little Giant" with continued financial support for specialized, sophisticated and innovative enterprises
- In March 2023, the company will expand its scale and move from Fuhai Huaide Cuihai Industrial Park to Buildings 10 and 11 of Fuyong Longwangmiao Industrial Park.
- In February 2023, it was awarded the Postdoctoral Innovation and Practice Base by the Shenzhen Human Resources and Social Security Bureau

2022

- In 2022, awarded as a national-level "Little Giant" enterprise by the Ministry of Industry and Information Technology
- In December 2021, won the "Shenzhen Advanced Manufacturing Intelligent Equipment Field Pioneering Bull Award" issued by Shenzhen Electronic Equipment Industry Association for the Socialist Pilot Demonstration Zone
- In December 2021, the industrial CT/3D X-ray inspection system was awarded the "China SMT Innovation Achievement Award" by the Guangdong Institute of Electronics

2020

- In January 2020, Zhuomao was awarded the "Shenzhen Equipment Industry-Leading Enterprise in SMT Segmentation" by Shenzhen Electronic Equipment Industry Association
- In January 2020, the independently developed X-ray Inline Counting Machine was awarded the "China SMT Innovation Achievement Award" by the Guangdong Electronics Society

2019

- In 2019 officially became a qualified supplier of Foxconn
- In 2019 officially became a qualified supplier of Huawei
- In July 2019 Strategic cooperation with Henan University of Science and Technology to create a post-doctoral workstation
- In February 2019, Hubei Zhuomao Intelligent Technology Co., Ltd. was established and formally settled in Hubei Dongjin New District Intelligent Equipment High-tech Industrial Park and put into production
- In January 2019 passed the intellectual property management system certification

2018

- In 2018 officially became a qualified supplier of ZTE
- In December 2018, Mr. Wen Quan, the general manager of Zhuomao, was awarded the "Leading Talent" Award for the 40th Anniversary of the Reform and Opening-up by the Shenzhen Electronic Equipment Industry Association
- In December 2018, the 3D X-ray Inspection Equipment was awarded the "China SMT Innovation Achievement Award" by the Guangdong Electronics Society
- In September 2018, the Micro-focus X-ray Inspection Equipment was granted the exemption management certification by Guangdong Environmental Protection Department
- In October 2017, Zhuomao won the "2017 Guangdong's most competitive enterprise" award

2016

- In October 2016, the laser screen repair equipment won the key support project of "SME Technology Innovation" by Baoan Science and Technology Bureau
- In December 2015, Zhuomao was awarded the title of "2015 Shenzhen Enterprise Cultural Construction Excellent Unit" by the Shenzhen Enterprise Federation
- In November 2015, the general manager Wen Quan was awarded the title of "Top Ten Outstanding Young Persons in Xixiang, Bao'an District"
- In September 2015, the whole relocation from Xixiang Sanwei Donghua Industrial Park to the 10th building of Fuyong Huaide Cuihai Industrial Park, and held the "10 Anniversary Celebration" event
- In June 2015, Zhuomao won the "2014 Guangdong Integrity Demonstration Enterprise" certificate issued by the Guangdong Federation of Enterprises

2014

- In October 2014, Zhuomao won the title of "2014 Deloitte China-Shenzhen High-Tech, High-Growth Top 20 Enterprises"
- In August 2014, it won the "2014 Electronic Equipment Industry Design Red Sail Award" issued by the China Electronic Equipment Industry Expo Organizing Committee
- In August 2013, the general manager Wen Quan was awarded the title of "Outstanding Entrepreneur of China Electronics Manufacturing Industry" by the Guangdong Electronics Society
- In August 2013, Zhuomao won the "China Electronic Equipment Most Innovative Ability Award" issued by the China Electronic Equipment Industry Expo Organizing Committee
- In May 2013, it obtained the "Integrity AAA" certification from the China SME Association and the Ministry of Commerce
- In January 2013, Zhuomao became a qualified supplier of "Epson Technology (Shenzhen) Co., Ltd."
- In January 2013, the first fully automatic BGA Reballing machine in China was born and successfully applied for invention patent and obtained authorization
- In August 2012, Suzhou Zhuomao Optoelectronics Technology Co., Ltd. was established

2013

- In December 2011, Zhuomao won the title of the ninth "Most Potential Shenzhen Famous Brand Enterprise"
- In October 2011, Zhuomao obtained the certificate of "National High-tech Enterprise"
- In March 2011, Zhuomao became a qualified supplier of "Chongqing Space Rocket (Bashan Instrument)"

2010

- In July 2010, Zhuomao registered the trademark "Seamark ZM", and officially became a strategic partner with DIC Corporation of Japan
- In March 2010, it was all selected as a qualified supplier by well-known domestic brands such as Skyworth, Changhong, and Hisense
- In January 2010, it was awarded the title of "2009 Civilized and Honest Business Household" by the Shenzhen Industrial and Commercial Bureau
- In Dec. 2009, Zhuomao was recognized as "Shenzhen Dual Software Enterprise""
- In November 2009, Zhuomao passed ISO9001: 2008 quality management system certification
- In October 2009, Zhuomao Technology (Hong Kong) Co., Ltd. was established

2008

- In July 2008, Zhuomao successfully passed the international CE certification
- In March 2008, Zhuomao established a cooperative relationship with Shenzhen Graduate School of Tsinghua University

2007

- In December 2007, Zhuomao became the designated supplier of Taiwan Gigabyte Technology Rework Equipment

2006

- In April 2006, Zhuomao participated in Nepcon for the first time, and cooperated with well-known IT companies such as Lenovo, Tongfang, TCL, etc.
- In March 2006, the first optical alignment rework station ZM-R680C entered the Tianjin market, Tianjin Daisuke Electronics Co., Ltd. (Korean-owned enterprise)

2005

- In 2005, Shenzhen Zhuomao Technology Co., Ltd. was formally established



The ranking is in no particular order. Thank you for your support !





## Honors & Qualifications

## Corporate Philosophy

### Honors



### Qualifications

#### Trademark Registration



#### Software Copyright



#### Patent



#### System Certification



### Vision

Build a leading enterprise in intelligent equipment with a century-long legacy

### Mission

Innovate inspection technologies to empower the intelligent manufacturing industry

#### Market Culture

Creating all possibilities

#### Brand Culture

Perfection

### Core Values

Customer First  
Collaborative Innovation

Integrity and Win-Win  
Pursuit of Excellence

#### Talent Culture

Using employees with  
moral integrity and ability

#### Management Culture

Focus on the strugglers

Strong sense of responsibility

Strong learning ability

《《《 Our **Professionalism** 《《《

Zhuomao Technology was established on May 20, 2005

Strong execution

Excellent professionalism



# X6600

## X-Ray Offline Inspection Equipment

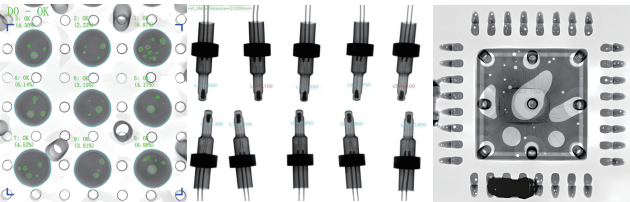
X6600 is a cost-effective general-purpose offline precision micro-focus X-ray intelligent inspection equipment, equipped with innovative self-developed intelligent inspection software and a new generation of image algorithms. It has the characteristics of high magnification, high resolution, multi-angle inspection, large area inspection platform, etc. It meets the general X-ray inspection needs and has a wide range of applications. It is suitable for the inspection of offline products in various factories.

### Product Features

- Wide Range of Applications:** High resolution, high magnification, to obtain the best image
- Intelligent Inspection Software:** Equipped with innovative self-developed intelligent inspection software
- Image Enhancement:** New image enhancement processing and preset filter algorithm
- Human-computer Interaction and Efficiency:** Automatic centering display and automatic following, the Inspection area is automatically displayed in the center of the window
- Multi-angle Inspection:** Multi-angle analysis of internal structural defects of objects
- CNC Mode:** Free point and matrix, used for batch Inspection scenarios
- Inspection Report:** Automatically generate Inspection report
- Multiple Safety Protection:** Real-time monitoring of radiation value, safety interlock, automatic shutdown of radiation source in idle state and other multiple protections
- Inspection Algorithm Customization:** AI intelligent inspection algorithm can be customized according to actual needs of users

### Technical Advantages

- Automatic Defect Recognition**  
Can identify defects such as size, area, broken wire, bridging, etc.
- Customizable Image Algorithm**  
Develop specific software algorithms based on customer product characteristics to achieve fully automatic defect recognition and inspection functions, including presence, cracks, broken wires, offsets, size, quantity, etc.



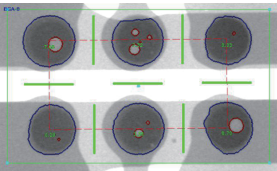
BGA Bubble Inspection    Sensor Size Measurement    QFN Inspection



### Automatic Void Ratio Calculation

#### Enhanced BGA Extending Inspection Function

It can quickly select and mark a single soldering ball, or select the soldering balls to be inspected in a matrix, and can manually or automatically identify the BGA soldering balls and complete the inspection. Follow the system guidelines to easily complete the inspection process and ensure accurate and reliable inspection results.



### Product Parameters

Model No.		Standard Model X6600	High-End Model X6600
X-Ray Tube	X-Ray Tube Type	Reflective sealed micro-focus X-ray source	
	Tube Voltage	0-90KV	
	Tube Current	0-200μA	
	Maximum Output Power	8W	
	Micro Focus Size	10μm	
Flat Panel Detector	Flat Panel Type	Amorphous Silicon Flat Panel Detector	
	Pixel Matrix	1536x1536	
	Field of View	130mmx130mm	
	Resolution	5.5Lp/mm	
	Image Frame Rate (1x1)	20fps	
	AD Conversion Digits	16bits	
Equipment Specifications	Input Power	220V 10A 50-60Hz	
	Operation System	Industrial Computer Win10 64 bits	
	Maximum Sample Size	540mm×440mm	
	Dimensions	L1200xW1200xH1800	L1245xW1230xH1900
	Net Weight	950KG	1170KG

# X6600B

## X-Ray Offline Inspection Equipment

X6600B is a universal offline precision micro-focus X-ray intelligent inspection equipment, equipped with innovative self-developed intelligent inspection software and a new generation of image algorithms. It adopts a high-voltage X-ray tube design with strong penetration, high image quality, easy to find defects, and a wider range of applications. One-button automatic opening and closing of the movable door facilitates personnel operation. Suitable for the inspection of offline products in various factories.

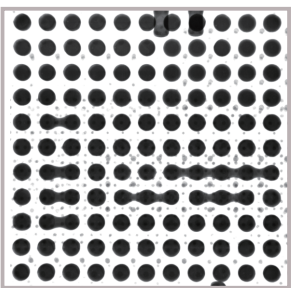
### Product Features

- Wider Application Range:** High voltage, high resolution, high magnification, to obtain the best image
- Intelligent Inspection software:** equipped with innovative self-developed intelligent inspection software
- Intelligent detection software:** Equipped with innovative self-developed intelligent detection software
- Image Enhancement:** New image enhancement processing and preset filter algorithm
- Human-computer Interaction and Efficiency:** One-button door opening and closing, automatic centering display, automatic following
- Multi-angle Inspection:** Multi-angle analysis of internal structural CNC Mode: Free point and matrix, used for batch Inspection scene Inspection
- Report:** Automatic generation of Inspection report
- Multiple Safety Protection:** Real-time monitoring of radiation value, safety interlock, automatic shutdown of radiation source in idle state and other multiple protections
- Fingerprint Function:** Ensure information security and authorize special personnel to control equipment
- Inspection Algorithm Customization:** AI intelligent inspection algorithm can be customized according to actual needs of users
- Scan Code Traceability (Optional):** Barcode information is associated with Inspection results for traceability and verification
- Rotating Stage (Optional):** Convenient for all-round Inspection of product defects

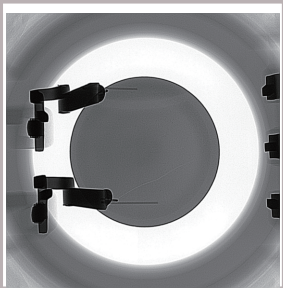
### CNC Automatic Operation Inspection

- CNC multi-point automatic inspection can be performed, and multi-point coordinates can be set according to user product specifications for automatic inspection.
- Automatic CNC operation inspection can automatically store images, automatically generate reports, and perform batch inspection.

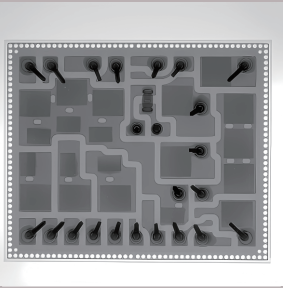
### Application Cases



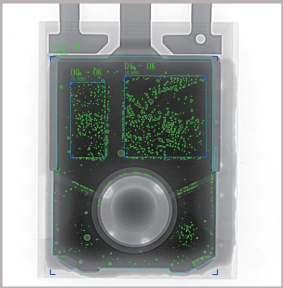
BGA Soldering



Sensor Cracks



IGBT



IGBT Void Inspection



### Product Parameters

Model No.		X6600B
X-Ray Tube	X-Ray Tube Type	Reflective sealed micro-focus X-ray source
	Tube Voltage	40-130KV
	Tube Current	10-300μA
	Maximum Output Power	39W
	Micro Focus Size	5μm (at 4W)-40μm
Flat Panel Detector	Flat Panel Type	Amorphous Silicon Flat Panel Detector
	Pixel Matrix	1536x1536
	Field of View	130mmx130mm
	Resolution	5.5Lp/mm
	Image Frame Rate (1x1)	20fps
	AD Conversion Digits	16bits
Equipment Specifications	Input Power	220V 10A 50-60Hz
	Operation System	Industrial Computer Win10 64 bits
	Maximum Sample Size	620mm×620mm
	Dimensions	L1380mm×W1425×H1951mm
	Net Weight	1800KG